



NEST RESIDENCY

COMFORT & SATISFACTION

A Project By:







Nest Residency a project that offers you the facility of a premium lifestyle at an astonishing affordable price because one does not compromise when it comes to family.

Nest Residency offers meticulously planned 2 BHK & PENT HOUSES. Its a house that is built to satisfy people of all age groups.

Nest Residency a place where one will not only live but will live a healthy life. With recreation facilities like state of art swimming pool, gymnasium, etc. life in Mumbai becomes at peace. That's not all it also has a very well-planned garden for elders and a state of the art kids play area for kids "Something for all age groups".

So come and experience Nest Residency where Living is more of everything "Joy, Space, Health, and Happiness."



TYPICAL FLOOR PLAN



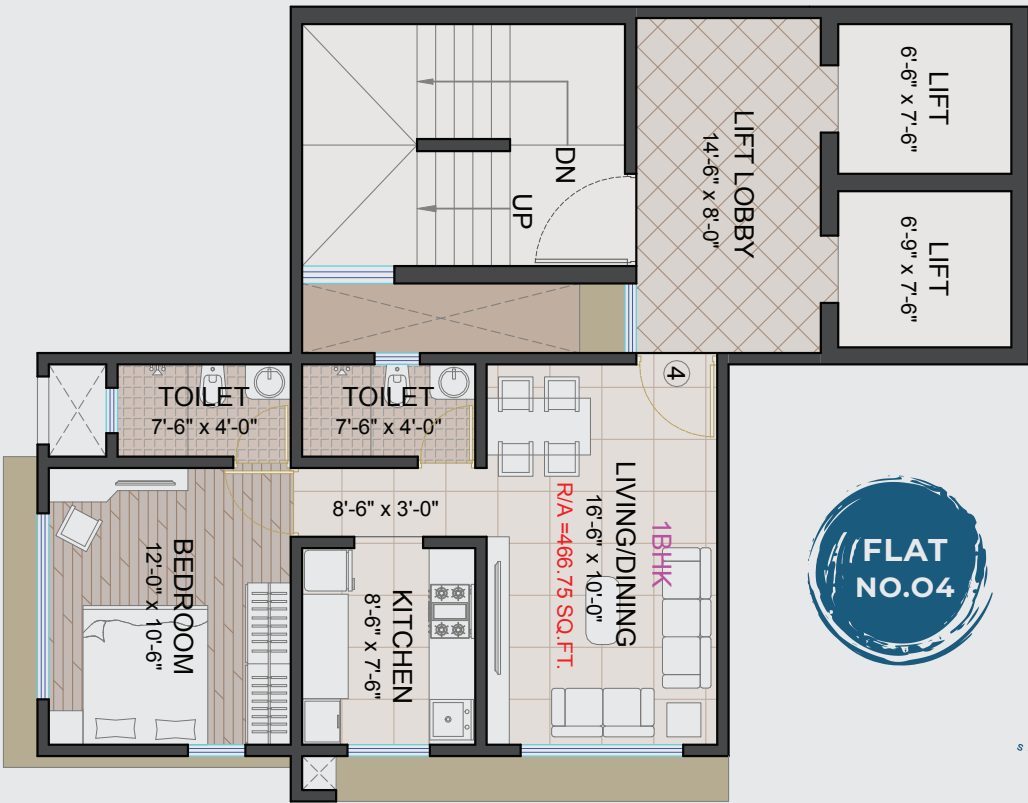
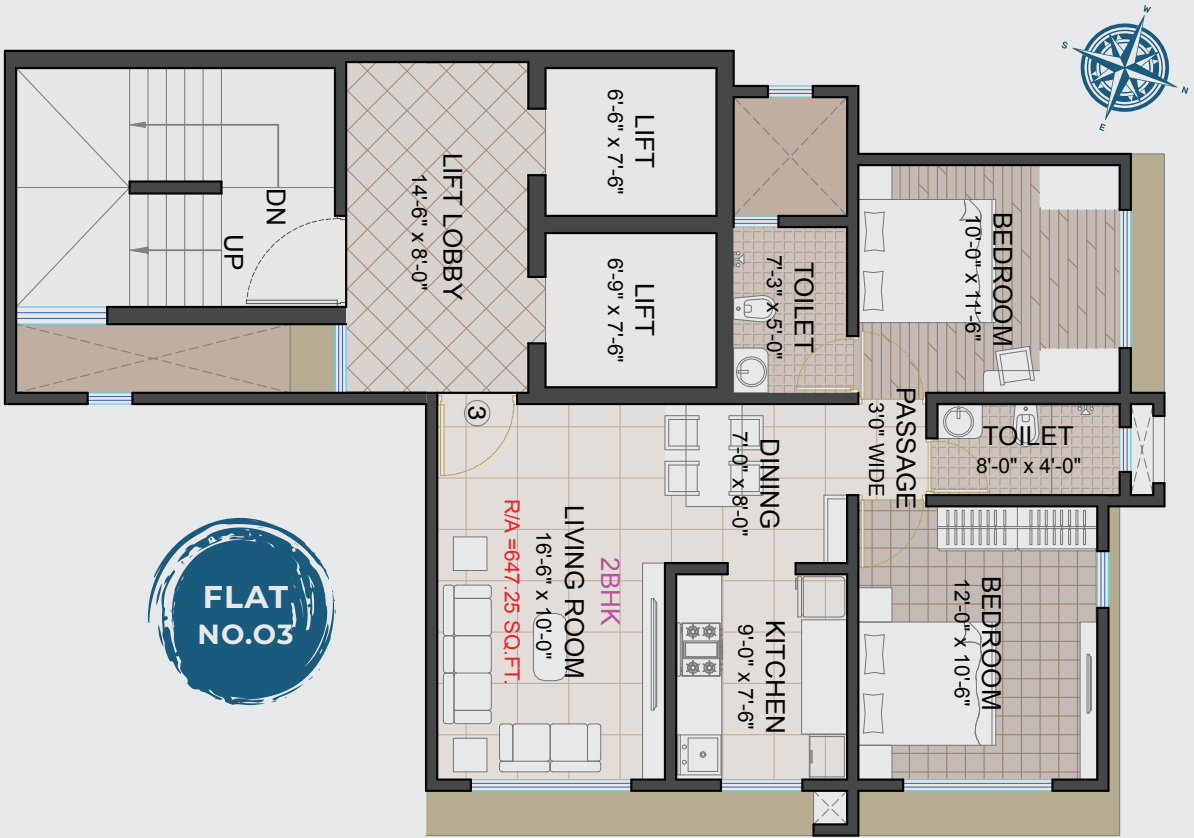
1ST FLOOR - 7TH FLOOR, 9TH FLOOR - 12TH FLOOR

REFUGE FLOOR PLAN



8TH FLOOR





NEAR BY AMENITIES / UTILITIES



W. E. HIGHWAY
5 MINS



**INTERATIONAL
AIRPORT 5 MINS**



**ANDHERI RAILWAY
STATION 10 MINS**



**BOMBAY CAMBRIDGE
HIGH SCHOOL 1 MIN**



HOSPITAL
5 MINS



METRO STATION
5 MINS

Indoor Games Room

Roof top amenities

Children Play Area

Gymnasium

EV Charging

**Attractive double height
entrance lobby.**

Branded high speed elevators.

Fire-fighting equipment.

Rain Water Harvesting Facility

Good quality Vitrified tiles flooring.

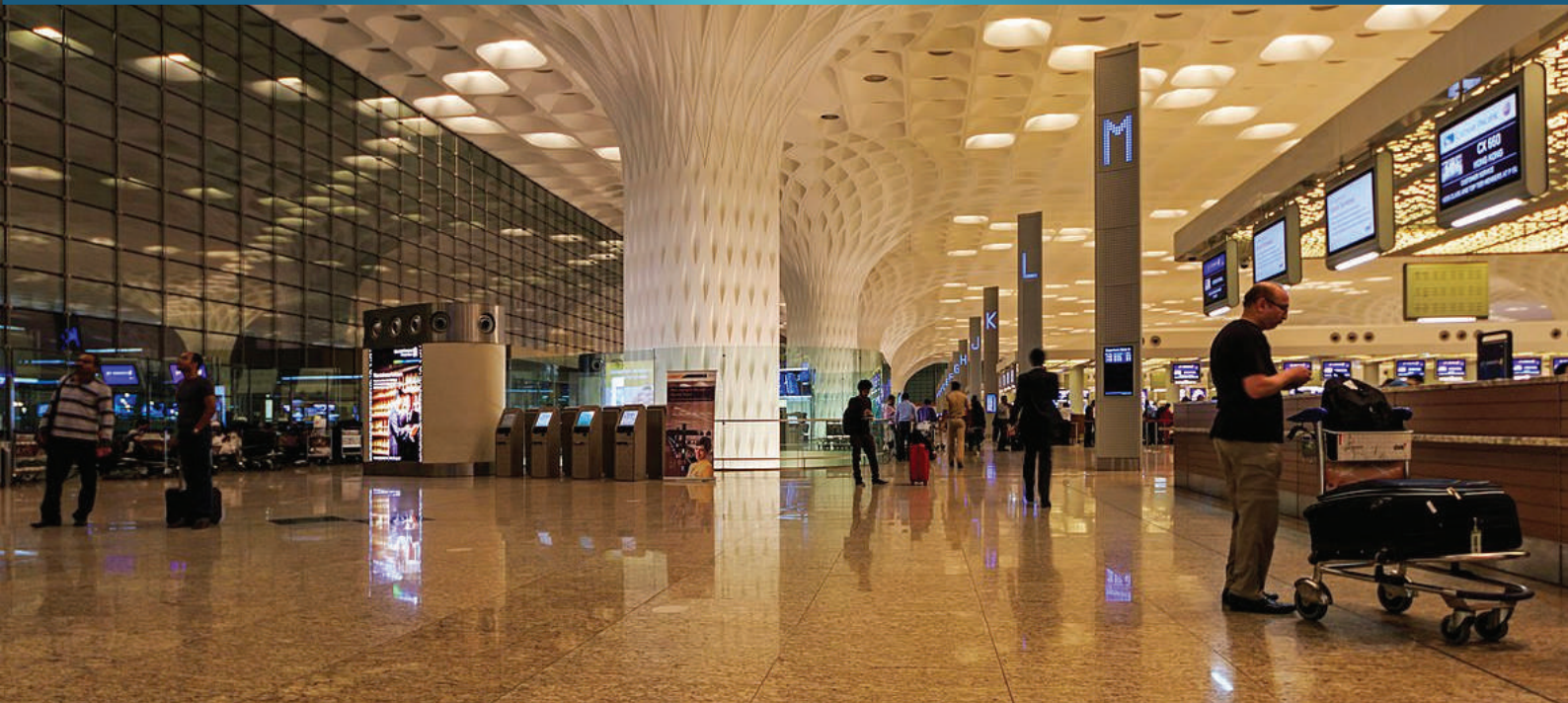
**POP finish walls with
good quality paint.**

**Jaguar or equivalent fittings
in washrooms.**

Polycab copper wiring in the flat.

Quality Electric Switches.

**24/7 Top Notch CCTV
Surveillance**







**WE BUILD HOMES,
HOMES BUILD COMFORT,
COMFORT BUILDS SATISFACTION,
SATISFACTION IS OUR EARNINGS**

NEST RESIDENCY

COMFORT & SATISFACTION



NEST RESIDENCY

COMFORT & SATISFACTION

Corporate Office :

103, Ankita Building, Cross Road
of Nehru, Dixit Road, Vile Parle (E),
Mumbai- 400057

Site Address :

Opp. Bombay Cambridge
High School, Guru Rabindranath
Tagore Marg, J.B. Nagar,
Andheri (E), Mumbai- 400099.

Contact :

Tel : +912235062845

Email : Info@nestdevelopers.in | www.nestdeveloper.in



Design & Liasoning Architect

Aashish Solanki
(Concrete Design)

RCC Consultants

P. K. Sura

PMC & MEP

UniSteps Consulting



MAHARERA NO - P51800035149
<http://maharera.mahaonline.gov.in>